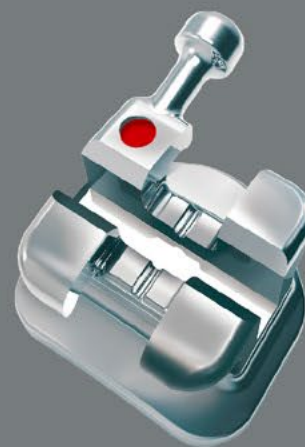


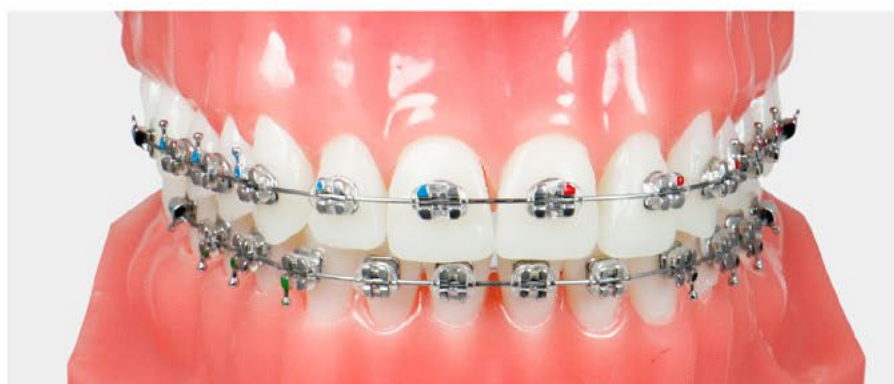
# Zeemas A



+63927 039 6000 +632 8 573 7320 sales@ddmdental.com www.ddmdental.com

## Classic Twin Bracket

- MIM One Piece Construction
- Low Profile
- Unique Maze Base Design



## Zeemas A

Material: 17-4 PH Stainless Steel (630SS)

Prescription: McLaughlin, Bennett & Trevisi .022"/.018"

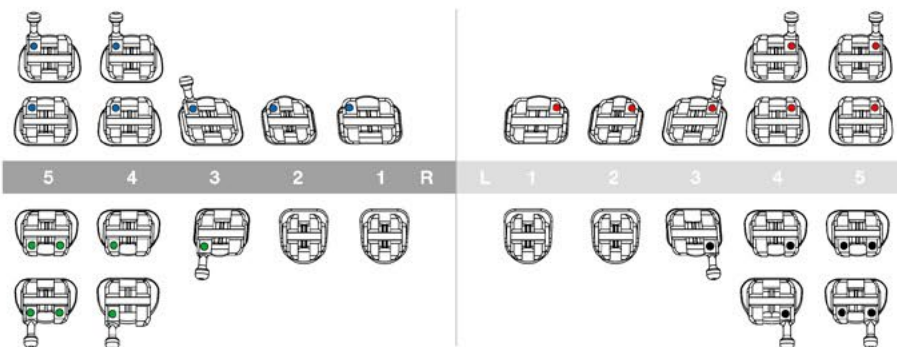
▲ Maxillary Arch	Torq.	Ang.	Width	R/L
Central	+17°	+4°	3.6mm	R L
Lateral	+10°	+8°	2.8mm	R L
Cuspid with hook	-7°	+8°	3.2mm	R L
Bicuspid with hook (w/o hook)	-7°	0°	3.2mm	R L

Material: 17-4 PH Stainless Steel (630SS)

Prescription: Roth .022"/.018"

▲ Maxillary Arch	Torq.	Ang.	Width	R/L
Central	+12°	+5°	3.6mm	R L
Lateral	+8°	+9°	2.8mm	R L
Cuspid with hook	0°	+11°	3.2mm	R L
Bicuspid with hook (w/o hook)	-7°	0°	3.2mm	R L

## Identification System



▼ Mandibular Arch	Torq.	Ang.	Width	R/L
Anterior	-6°	0°	2.4mm	R L
Cuspid with hook	-6°	+3°	3.2mm	R L
1 <sup>st</sup> Bicuspid with hook (w/o hook)	-12°	+2°	3.2mm	R L
2 <sup>nd</sup> Bicuspid with hook (w/o hook)	-17°	+2°	3.2mm	R L

▼ Mandibular Arch	Torq.	Ang.	Width	R/L
Anterior	0°	0°	2.4mm	R L
Cuspid with hook	-11°	+5°	3.2mm	R L
1 <sup>st</sup> Bicuspid with hook (w/o hook)	-17°	0°	3.2mm	R L
2 <sup>nd</sup> Bicuspid with hook (w/o hook)	-22°	0°	3.2mm	R L